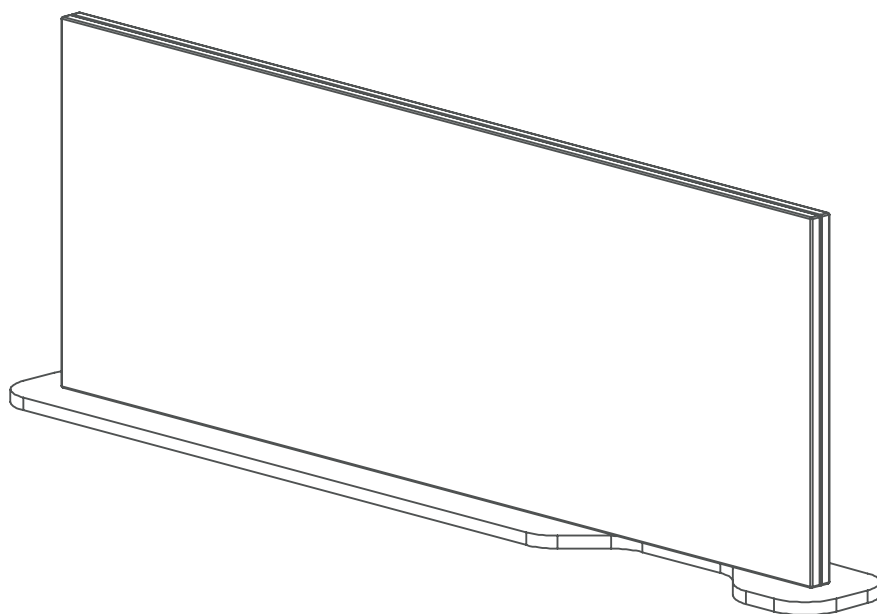


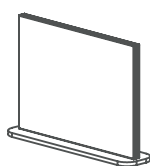
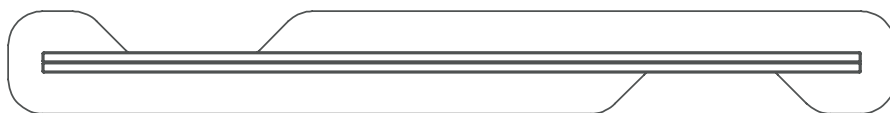
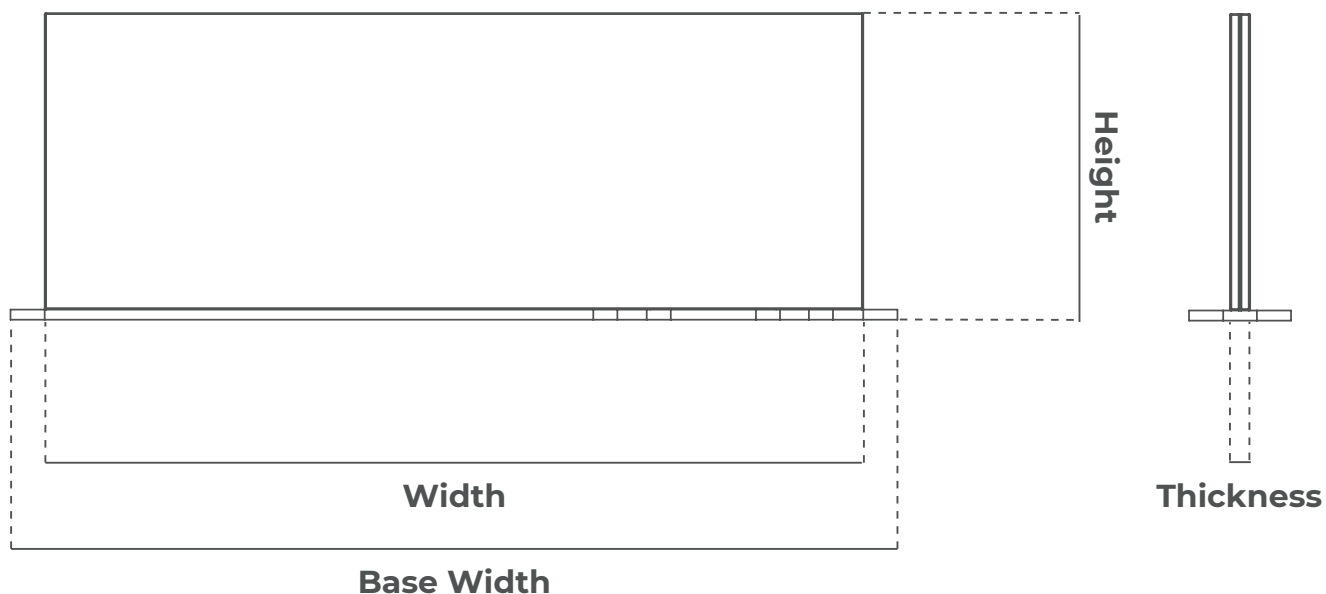
# Technical File

## Klever Line - Free Standing



# 01

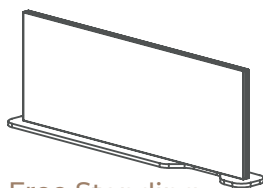
## Dimensions



### Free Standing

#### LATERAL

Width: 600mm Base Width: 650mm Height: 450mm Thickness: 28mm  
 Width: 700mm Base Width: 750mm Height: 450mm Thickness: 28mm



### Free Standing

#### FRONTAL

Width: 1200mm Base Width: 1300mm Height: 450mm Thickness: 28mm  
 Width: 1400mm Base Width: 1500mm Height: 450mm Thickness: 28mm  
 Width: 1600mm Base Width: 1700mm Height: 450mm Thickness: 28mm  
 Width: 1800mm Base Width: 1900mm Height: 450mm Thickness: 28mm

# 02

## Finishes



**Composition** 100% Polyester  
**Colour Fastness to light** DIN 54004  
**Flame Retardancy** DIN 4102 B2  
**Abrasion resistance** 300.000 cycles  
**Antibacterial, Antifungal and Antimycotic Protection**  
**Anti-Stain finish**  
**Anti-static finish**

**Faux Leather Finish**  
Auster



**Composition** 100% Polyester  
**Colour Fastness to light**  
**Flame Retardancy**  
**Abrasion resistance**  
**Antibacterial, Antifungal and Antimycotic Protection**  
**Anti-Stain finish**  
**Anti-static finish**

**Faux Leather Finish**  
Leinen



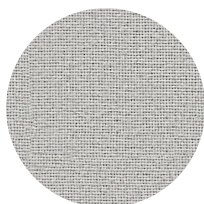
**Composition** 100% Polyester  
**Colour Fastness to light**  
**Flame Retardancy** DIN 4102 B2  
**Abrasion resistance** 300.000 cycles  
**Antibacterial, Antifungal and Antimycotic Protection**  
**Anti-Stain finish**  
**Anti-static finish**

**Faux Leather Finish**  
Pure White



**Composition** 100% Polyester  
**Colour Fastness to light**  
**Flame Retardancy**  
**Abrasion resistance**  
**Antibacterial, Antifungal and Antimycotic Protection**  
**Anti-Stain finish**  
**Anti-static finish**

**Faux Leather Finish**  
Taupe



**Woven Fabric Finish**  
Glass

**Composition** 100% Polypropylene

**Weight** 220 g/m<sup>2</sup>

**Flammability** EN 1021-1 (cigarette) // BS 476 Part 7 Class 1 (Adhered)  
EN 13501-1 (SBI) Adhered Class B, s2, d0

**Light Fastness** 6 (ISO 105 - B02)

**Fastness to Rubbing** Wet: 4, Dry: 4 (ISO 105 - X12)

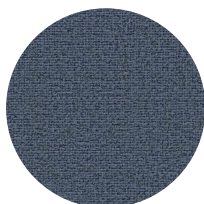
**Certified to the EU Ecolabel**

**Certified to Indoor Advantage™ Gold**

**Cleaning** Vacuum regularly, wipe with a damp cloth using a proprietary upholstery shampoo/soap. For deeper cleaning, use bleach or alcohol.

**Bleach Cleanable** ISO 105 E03 colour change 4 for dilution factor 1:4 chlorine solution

---



**Woven Fabric Finish**  
Easdale

**Composition** 100% Polypropylene

**Weight** 220 g/m<sup>2</sup>

**Flammability** EN 1021-1 (cigarette) // BS 476 Part 7 Class 1 (Adhered)  
EN 13501-1 (SBI) Adhered Class B, s2, d0

**Light Fastness** 6 (ISO 105 - B02)

**Fastness to Rubbing** Wet: 4, Dry: 4 (ISO 105 - X12)

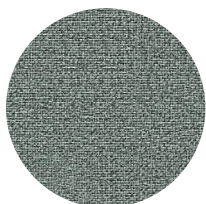
**Certified to the EU Ecolabel**

**Certified to Indoor Advantage™ Gold**

**Cleaning** Vacuum regularly, wipe with a damp cloth using a proprietary upholstery shampoo/soap. For deeper cleaning, use bleach or alcohol.

**Bleach Cleanable** ISO 105 E03 colour change 4 for dilution factor 1:4 chlorine solution

---



## Woven Fabric Finish

Lead

**Composition** 100% Polypropylene

**Weight** 220 g/m<sup>2</sup>

**Flammability** EN 1021-1 (cigarette) // BS 476 Part 7 Class 1 (Adhered)

EN 13501-1 (SBI) Adhered Class B, s2, d0

**Light Fastness** 6 (ISO 105 - B02)

**Fastness to Rubbing** Wet: 4, Dry: 4 (ISO 105 - X12)

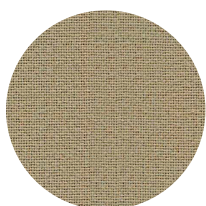
**Certified to the EU Ecolabel**

**Certified to Indoor Advantage™ Gold**

**Cleaning** Vacuum regularly, wipe with a damp cloth using a proprietary upholstery shampoo/soap. For deeper cleaning, use bleach or alcohol.

**Bleach Cleanable** ISO 105 E03 colour change 4 for dilution factor 1:4 chlorine solution

---



## Woven Fabric Finish

Beltane

**Composition** 100% Polypropylene

**Weight** 220 g/m<sup>2</sup>

**Flammability** EN 1021-1 (cigarette) // BS 476 Part 7 Class 1 (Adhered)

EN 13501-1 (SBI) Adhered Class B, s2, d0

**Light Fastness** 6 (ISO 105 - B02)

**Fastness to Rubbing** Wet: 4, Dry: 4 (ISO 105 - X12)

**Certified to the EU Ecolabel**

**Certified to Indoor Advantage™ Gold**

**Cleaning** Vacuum regularly, wipe with a damp cloth using a proprietary upholstery shampoo/soap. For deeper cleaning, use bleach or alcohol.

**Bleach Cleanable** ISO 105 E03 colour change 4 for dilution factor 1:4 chlorine solution

---