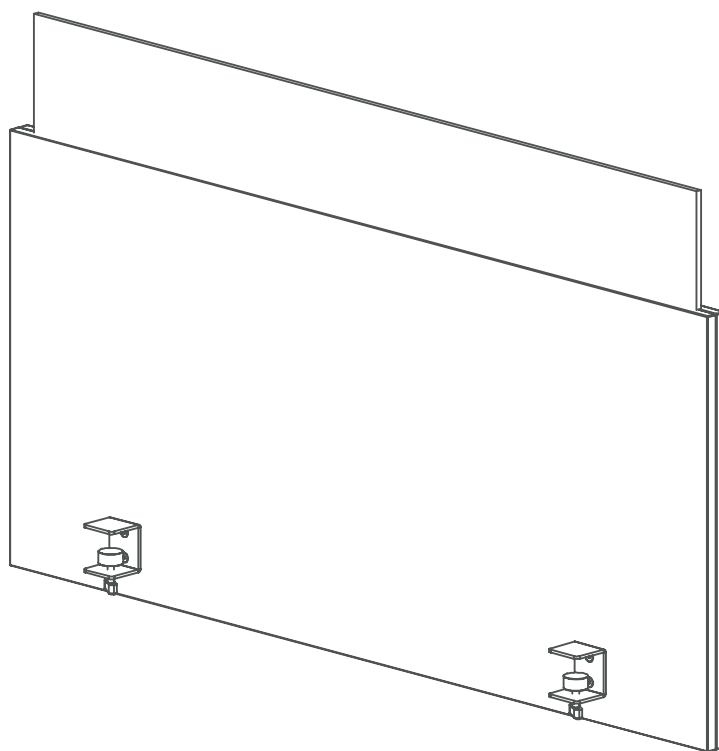


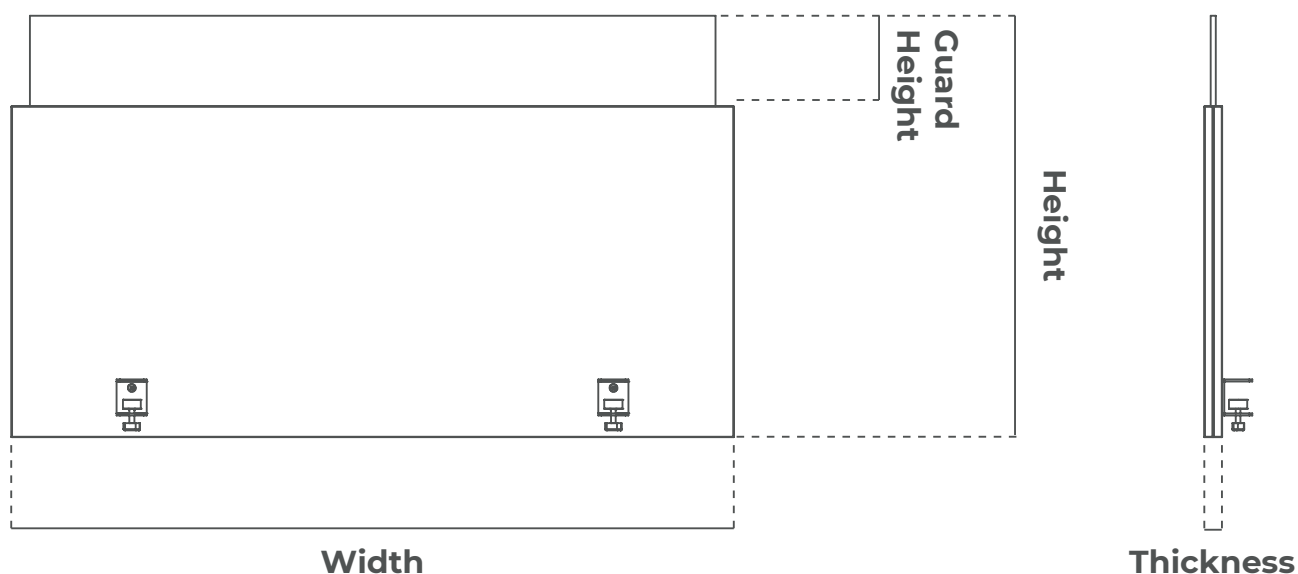
# Technical File

Klever Line - Desk Fix | Acrylic Guard



# 01

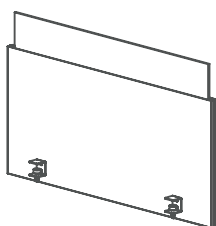
## Dimensions



### Desk Fix | Acrylic Guard

#### LATERAL

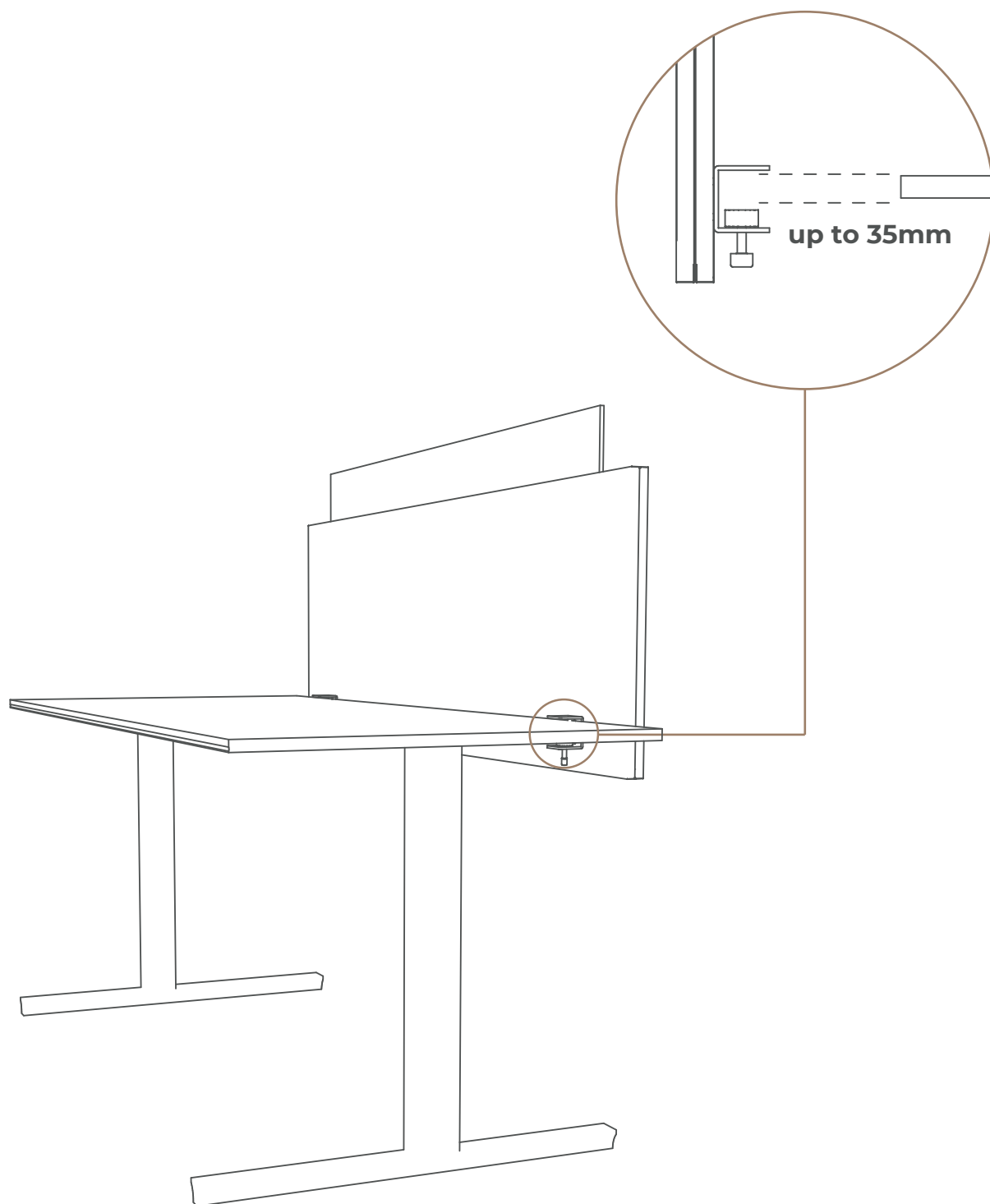
Width: 600mm   Height: 700mm   Acrylic Guard Height: 150mm   Thickness: 28mm  
Width: 700mm   Height: 700mm   Acrylic Guard Height: 150mm   Thickness: 28mm



### Desk Fix / Acrylic Guard

#### FRONTAL

Width: 1200mm   Height: 700mm   Acrylic Guard Height: 150mm   Thickness: 28mm  
Width: 1400mm   Height: 700mm   Acrylic Guard Height: 150mm   Thickness: 28mm  
Width: 1600mm   Height: 700mm   Acrylic Guard Height: 150mm   Thickness: 28mm  
Width: 1800mm   Height: 700mm   Acrylic Guard Height: 150mm   Thickness: 28mm



# 02

## Finishes



**Composition** 100% Polyester  
**Colour Fastness to light** DIN 54004  
**Flame Retardancy** DIN 4102 B2  
**Abrasion resistance** 300.000 cycles  
**Antibacterial, Antifungal and Antimycotic Protection**  
**Anti-Stain finish**  
**Anti-static finish**

**Faux Leather Finish**  
Auster



**Composition** 100% Polyester  
**Colour Fastness to light**  
**Flame Retardancy**  
**Abrasion resistance**  
**Antibacterial, Antifungal and Antimycotic Protection**  
**Anti-Stain finish**  
**Anti-static finish**

**Faux Leather Finish**  
Leinen



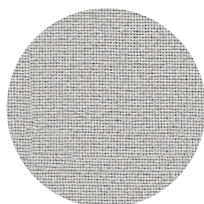
**Composition** 100% Polyester  
**Colour Fastness to light**  
**Flame Retardancy** DIN 4102 B2  
**Abrasion resistance** 300.000 cycles  
**Antibacterial, Antifungal and Antimycotic Protection**  
**Anti-Stain finish**  
**Anti-static finish**

**Faux Leather Finish**  
Pure White



**Composition** 100% Polyester  
**Colour Fastness to light**  
**Flame Retardancy**  
**Abrasion resistance**  
**Antibacterial, Antifungal and Antimycotic Protection**  
**Anti-Stain finish**  
**Anti-static finish**

**Faux Leather Finish**  
Taupe



## Woven Fabric Finish Glass

**Composition** 100% Polypropylene

**Weight** 220 g/m<sup>2</sup>

**Flammability** EN 1021-1 (cigarette) // BS 476 Part 7 Class 1 (Adhered)

EN 13501-1 (SBI) Adhered Class B, s2, d0

**Light Fastness** 6 (ISO 105 - B02)

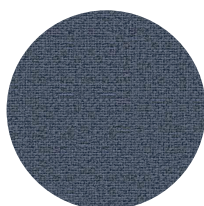
**Fastness to Rubbing** Wet: 4, Dry: 4 (ISO 105 - X12)

**Certified to the EU Ecolabel**

**Certified to Indoor Advantage™ Gold**

**Cleaning** Vacuum regularly, wipe with a damp cloth using a proprietary upholstery shampoo/soap. For deeper cleaning, use bleach or alcohol.

**Bleach Cleanable** ISO 105 E03 colour change 4 for dilution factor 1:4 chlorine solution



## Woven Fabric Finish Easdale

**Composition** 100% Polypropylene

**Weight** 220 g/m<sup>2</sup>

**Flammability** EN 1021-1 (cigarette) // BS 476 Part 7 Class 1 (Adhered)

EN 13501-1 (SBI) Adhered Class B, s2, d0

**Light Fastness** 6 (ISO 105 - B02)

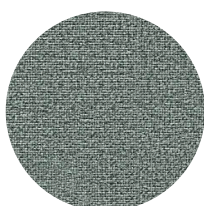
**Fastness to Rubbing** Wet: 4, Dry: 4 (ISO 105 - X12)

**Certified to the EU Ecolabel**

**Certified to Indoor Advantage™ Gold**

**Cleaning** Vacuum regularly, wipe with a damp cloth using a proprietary upholstery shampoo/soap. For deeper cleaning, use bleach or alcohol.

**Bleach Cleanable** ISO 105 E03 colour change 4 for dilution factor 1:4 chlorine solution



## Woven Fabric Finish Lead

**Composition** 100% Polypropylene

**Weight** 220 g/m<sup>2</sup>

**Flammability** EN 1021-1 (cigarette) // BS 476 Part 7 Class 1 (Adhered)

EN 13501-1 (SBI) Adhered Class B, s2, d0

**Light Fastness** 6 (ISO 105 - B02)

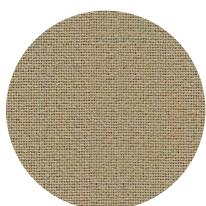
**Fastness to Rubbing** Wet: 4, Dry: 4 (ISO 105 - X12)

**Certified to the EU Ecolabel**

**Certified to Indoor Advantage™ Gold**

**Cleaning** Vacuum regularly, wipe with a damp cloth using a proprietary upholstery shampoo/soap. For deeper cleaning, use bleach or alcohol.

**Bleach Cleanable** ISO 105 E03 colour change 4 for dilution factor 1:4 chlorine solution



## Woven Fabric Finish Beltane

**Composition** 100% Polypropylene

**Weight** 220 g/m<sup>2</sup>

**Flammability** EN 1021-1 (cigarette) // BS 476 Part 7 Class 1 (Adhered)

EN 13501-1 (SBI) Adhered Class B, s2, d0

**Light Fastness** 6 (ISO 105 - B02)

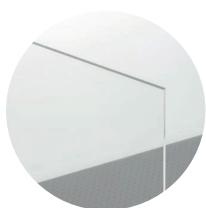
**Fastness to Rubbing** Wet: 4, Dry: 4 (ISO 105 - X12)

**Certified to the EU Ecolabel**

**Certified to Indoor Advantage™ Gold**

**Cleaning** Vacuum regularly, wipe with a damp cloth using a proprietary upholstery shampoo/soap. For deeper cleaning, use bleach or alcohol.

**Bleach Cleanable** ISO 105 E03 colour change 4 for dilution factor 1:4 chlorine solution



## Acrylic Clear

**Thickness** 8 mm

**Transparency** Clear